

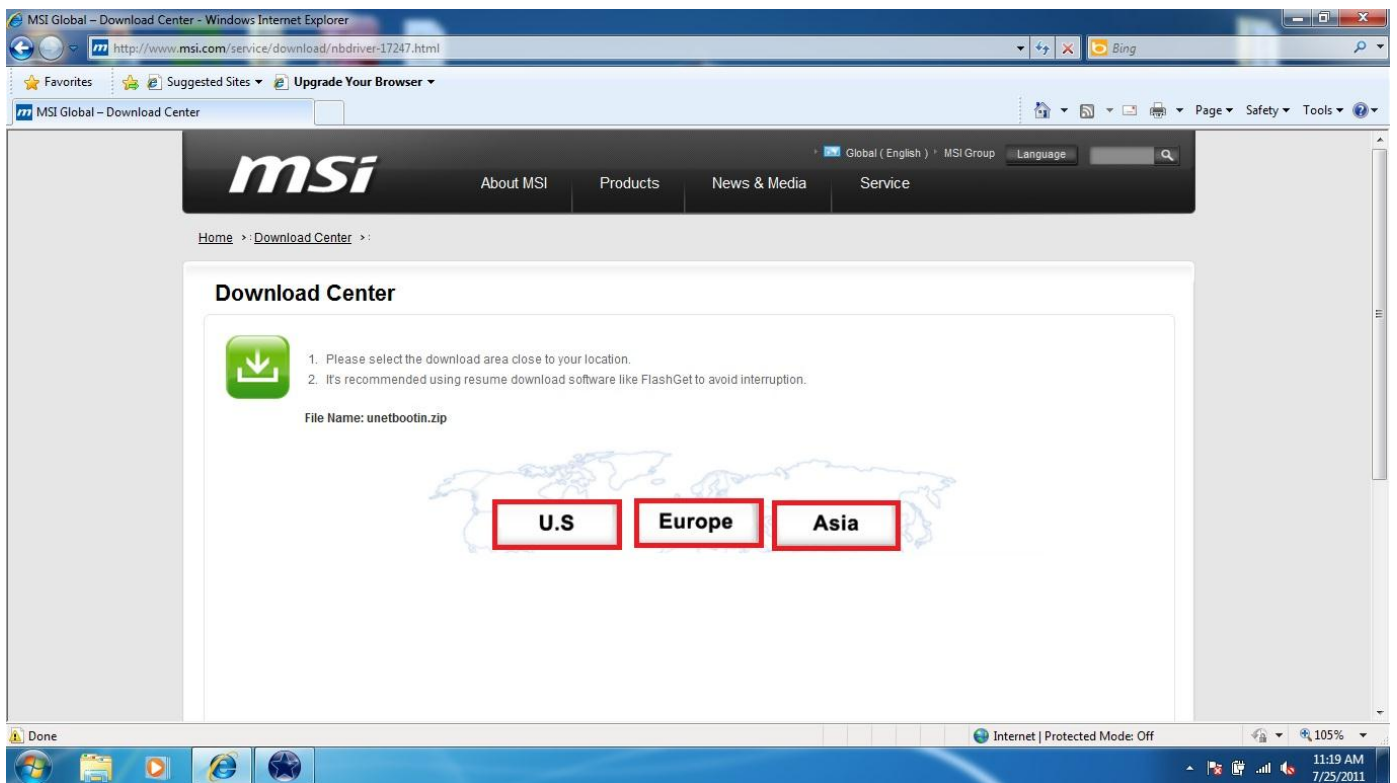
How to make a bootable flash disk and to flash BIOS

Tools to prepare:

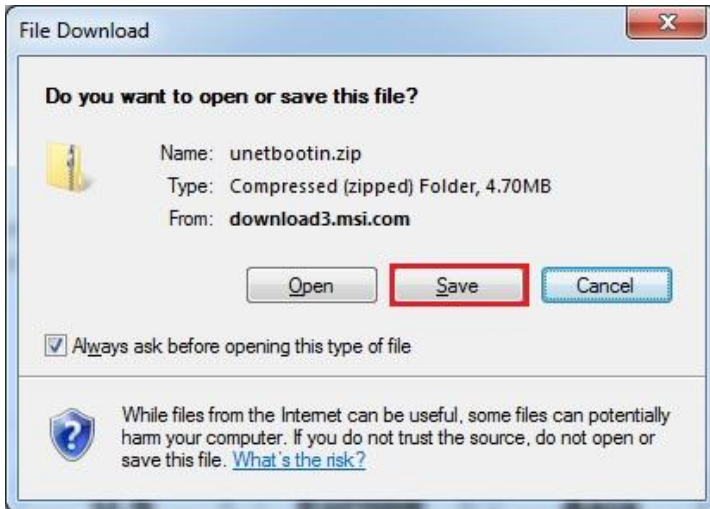
1. Flash Disk (It is strongly recommended to use usb flash drive less than 512M for better compatibility)
2. NB or PC which can connect to the Internet

Procedures:

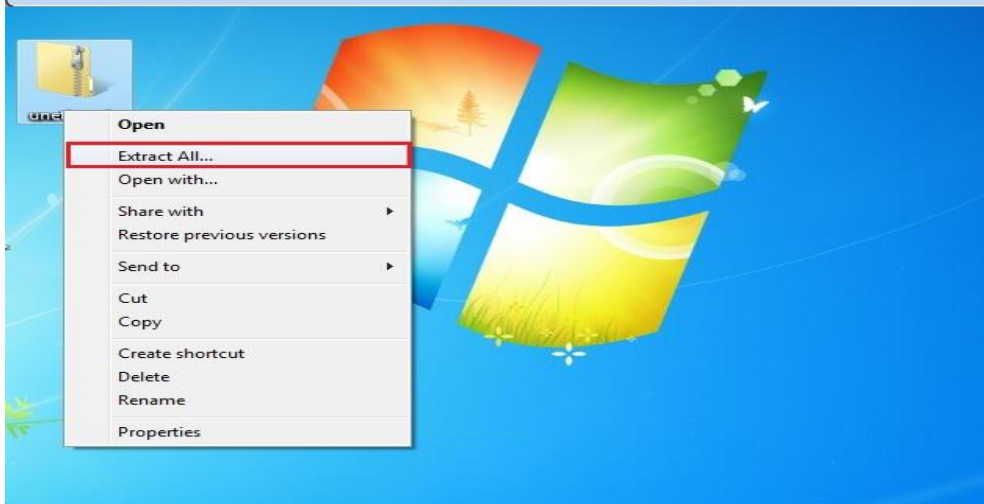
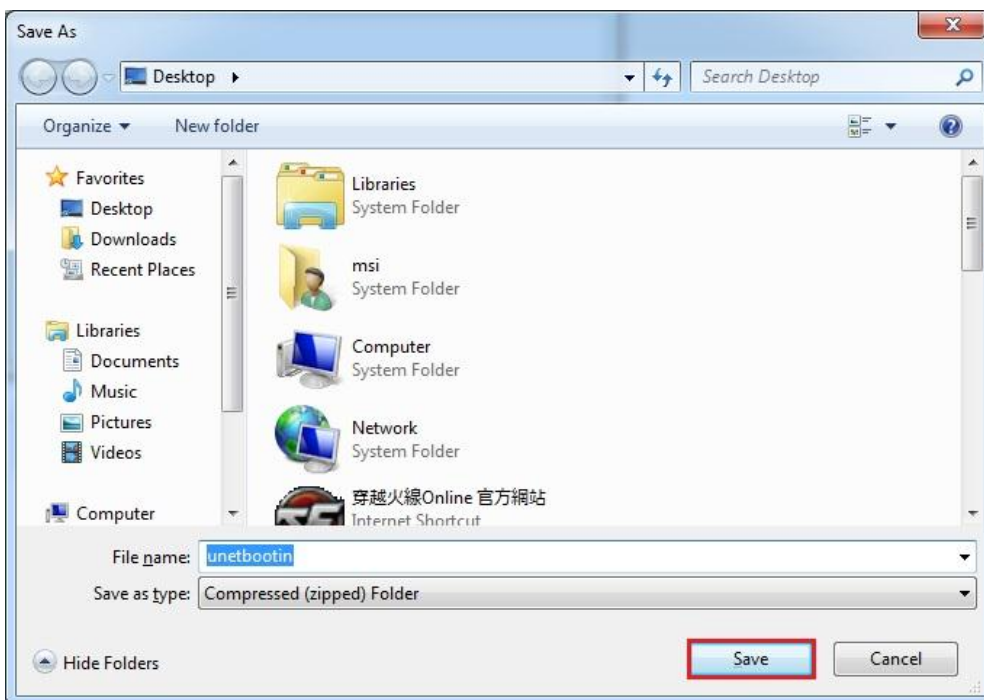
1. Connect the NB to the Internet, and then download the file from the link given below:
<http://www.msi.com/service/download/nbdriver-17247.html>



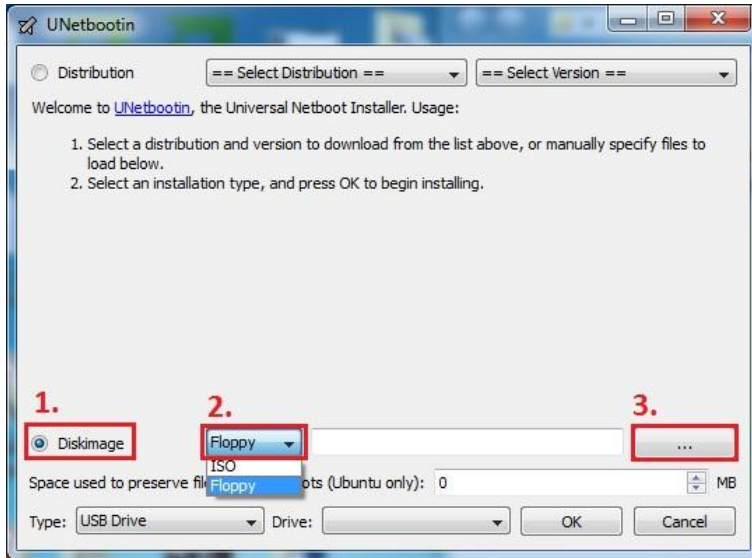
2. Press "Save".



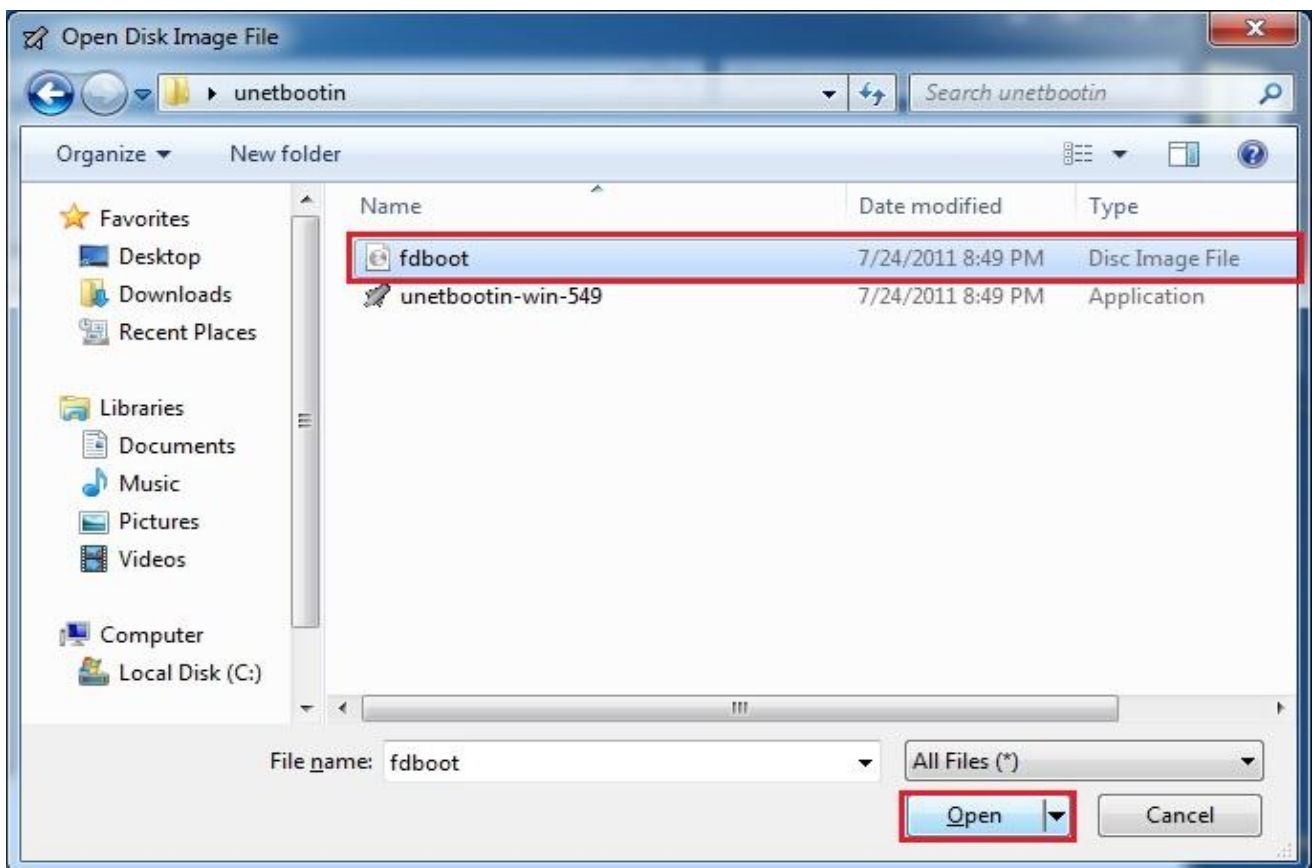
3. After pressing "Save", save the file on the desktop and then extract the zip file.



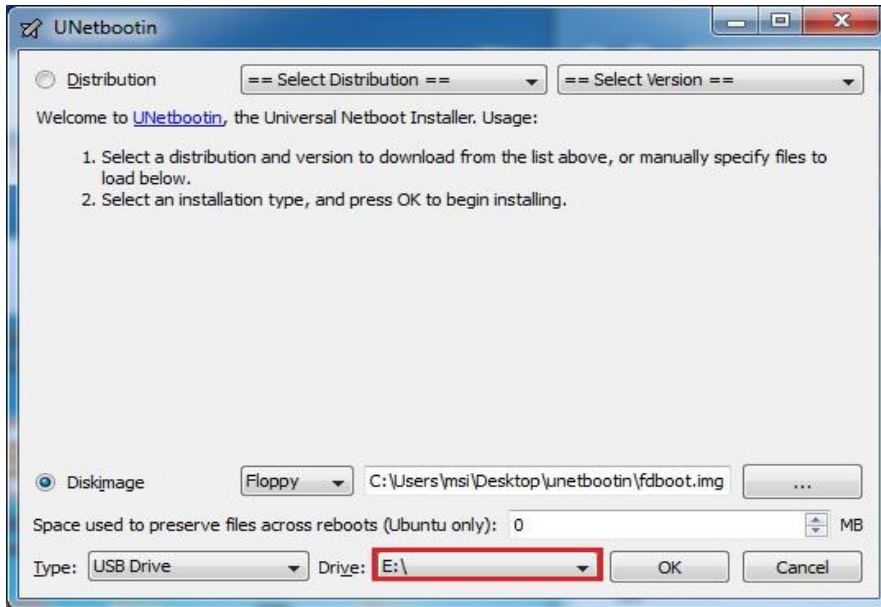
4. Extract the exe file and then select “Diskimage” and “Floppy” and browser.



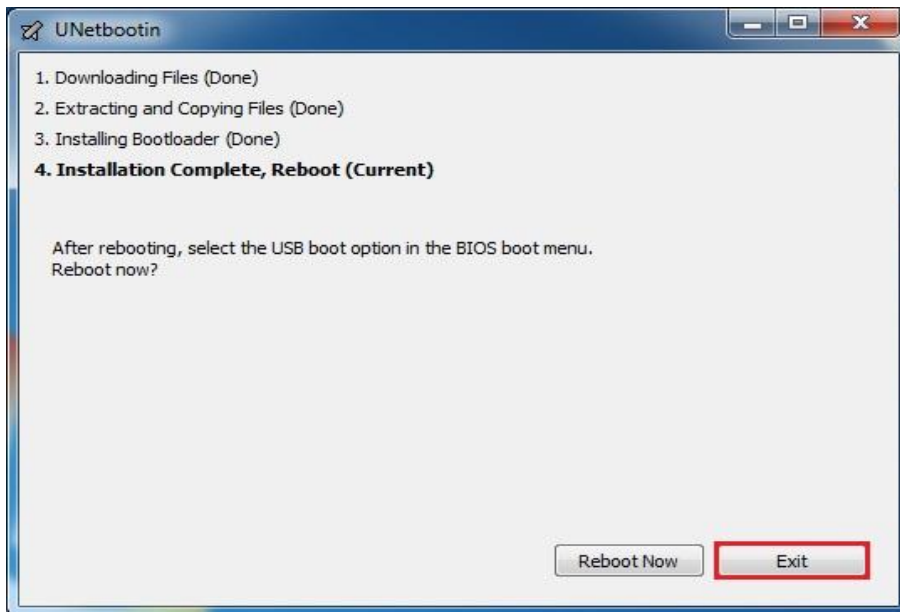
5. Select “fdboot” and press “open”.



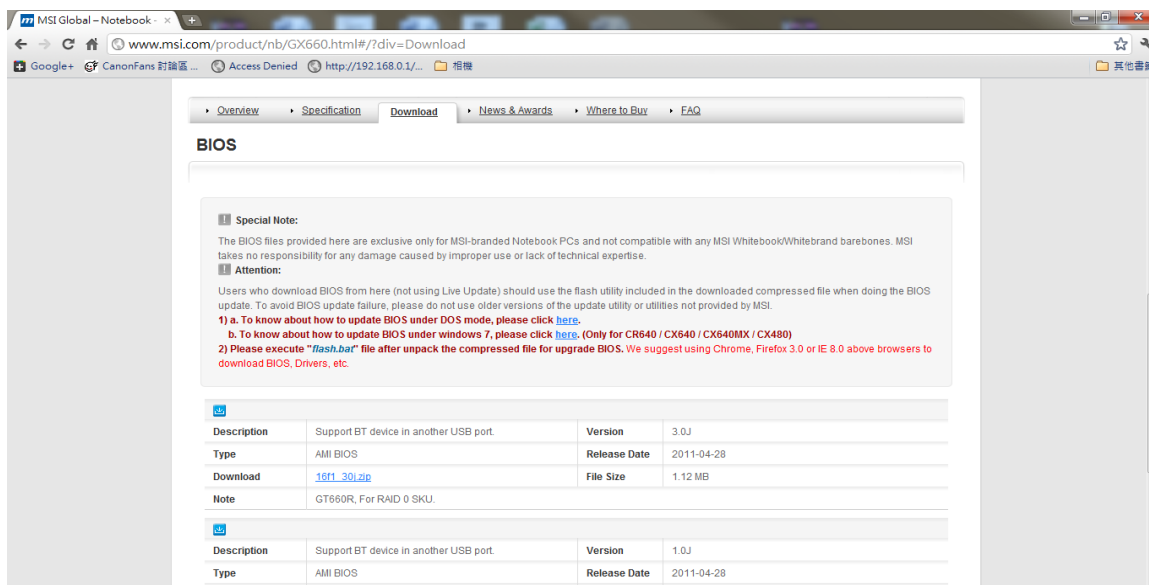
6. Confirm whether the drive corresponds to the USB flash disk. If correct, press "OK" directly.



7. Press "Exit" to exit system. Now, have you bootable flashdrive.



8. Open web browser, connect to MSI official website and download the corresponding BIOS.



How to flash MSI Notebook BIOS under DOS mode



Special Note:

The BIOS files provided here are exclusively for MSI products. MSI takes no responsibility for any damage caused by improper use or lack of technical expertise.

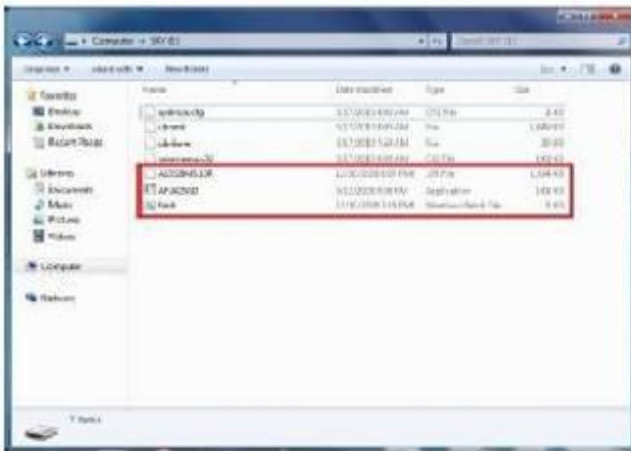


Attention:

Users who download BIOS from here should use the flash utility included in the downloaded compressed file when doing the BIOS update. To avoid BIOS update failure, please do not use older versions of the update utility or utilities not provided by MSI.

➤ **Update BIOS with a bootable USB flash drive (Pen drive):**

1. Extract the zip file containing the BIOS files and flash utility to a bootable USB flash drive (Pen drive).



2. Insert the USB flash drive (Pen drive) in the USB port.
3. Boot up the notebook and press F11 key to run Boot menu and then to select USB flash disk drive.

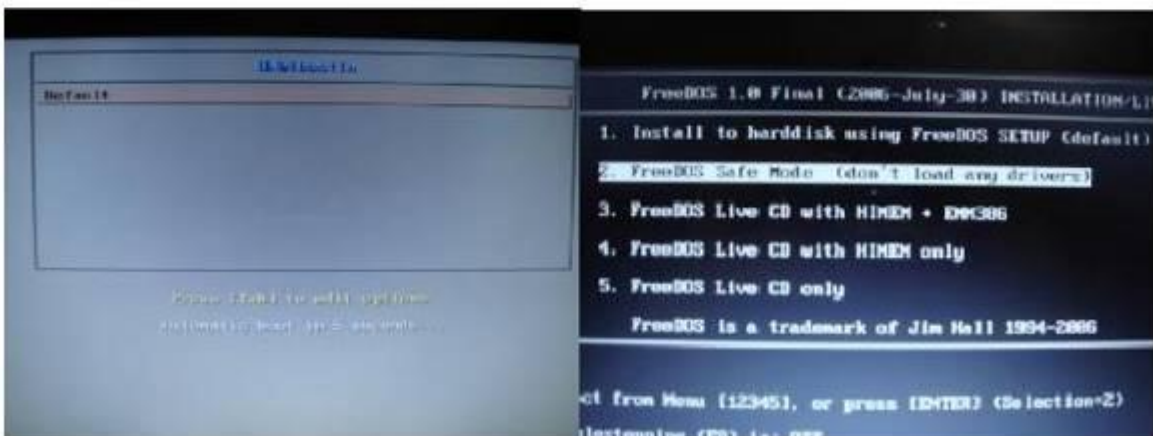
Note1: For some models, you need to go into the bios and change boot priority.

Note 2: Make sure the AC adapter is firmly connected to your notebook before you run this utility.



Make sure the AC adapter is firmly connected to your notebook before you run this utility.

4. Press Enter key and then to select “FreeDOS Safe Mode (don’t load any drivers)”.



5. Please access the correct drive. Here is an example. Type **b:** at DOS prompt A:\>, you should be able to see the files that you saved. Execute the batch file FLASH.BAT.



```
Welcome to the command prompt. No device...
A:\>b:
B:\>dir /u
Volume in drive B is SKY
Volume Serial Number is EC8B-7CAB
Directory of B:\

A1352.INS.10R      AFM25SD.EXE      CONFIG.SYS
SYSLINUX.CFG      UBNINIT          UBNKERN
2,933,865 bytes
0 dir(s)          62,898,432 bytes
B:\>flash_
```

6. Wait for a couple of seconds to complete the BIOS update procedure.

 **DO NOT power off the notebook during this BIOS update process.**

7. Power off the notebook after the BIOS update procedure is completed.

8. Remove battery pack and AC adapter.



9. Plug in battery pack or AC adapter.

9. Power on notebook and press <F1> key to enter the BIOS setup menu.

Note: This is only applicable for some models. For others, You will not be prompted with the message below, you can directly press "DEL" and load Set-up Default (see Step 10)



11. Select [Load Setup Defaults] and press <Enter> key to load BIOS default settings.

12. Select [Exit & Save Changes] and press <Enter> key to save changes and exit.

