



msi[®]

BIOS Update Instruction By EFI Shell



IMPORTANT!

Only update your BIOS if system is unstable or bug solutions correspond with your needs. Flashing BIOS incorrectly has risk to damage your system. Please check the guide and follow all of steps.

Things to prepare:

- USB 2.0 flash drive (Please format the USB flash drive to FAT)
- Notebook/Laptop
- Default power supply
- Internet connection

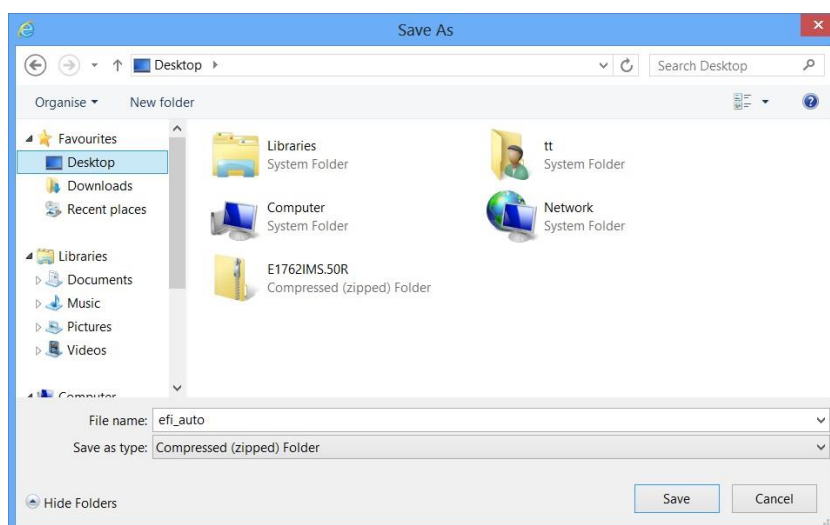
Part 1: Creating EFI Bootable Flash Drive

1. Connect your USB flash drive to your notebook and format it to FAT32.
2. Please visit this page to download the tool to create the EFI bootable USB flash drive.
http://download.msi.com/notebook_drivers/ap/efi_auto.zip

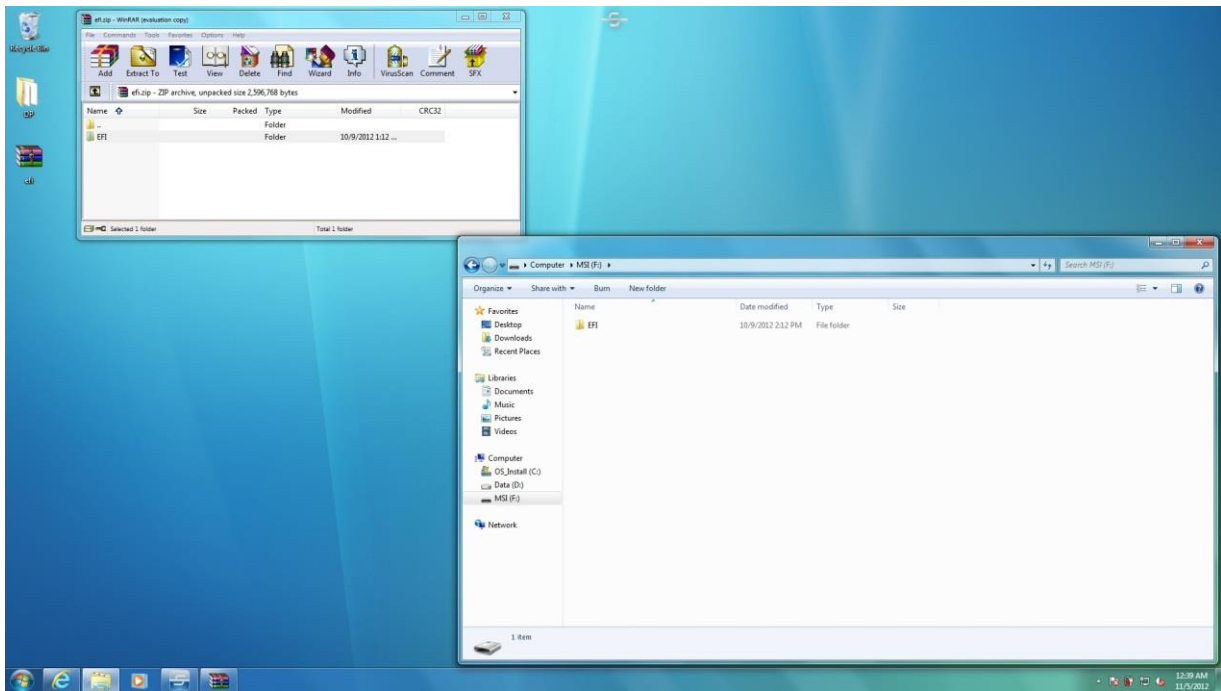
NOTE: If you want to execute manually, please refer the manual in the following link.

http://www.msi.com/files/pdf/Win8_BIOS_Update_Step_by_Step_Guide.pdf

3. Save the file to your Desktop.



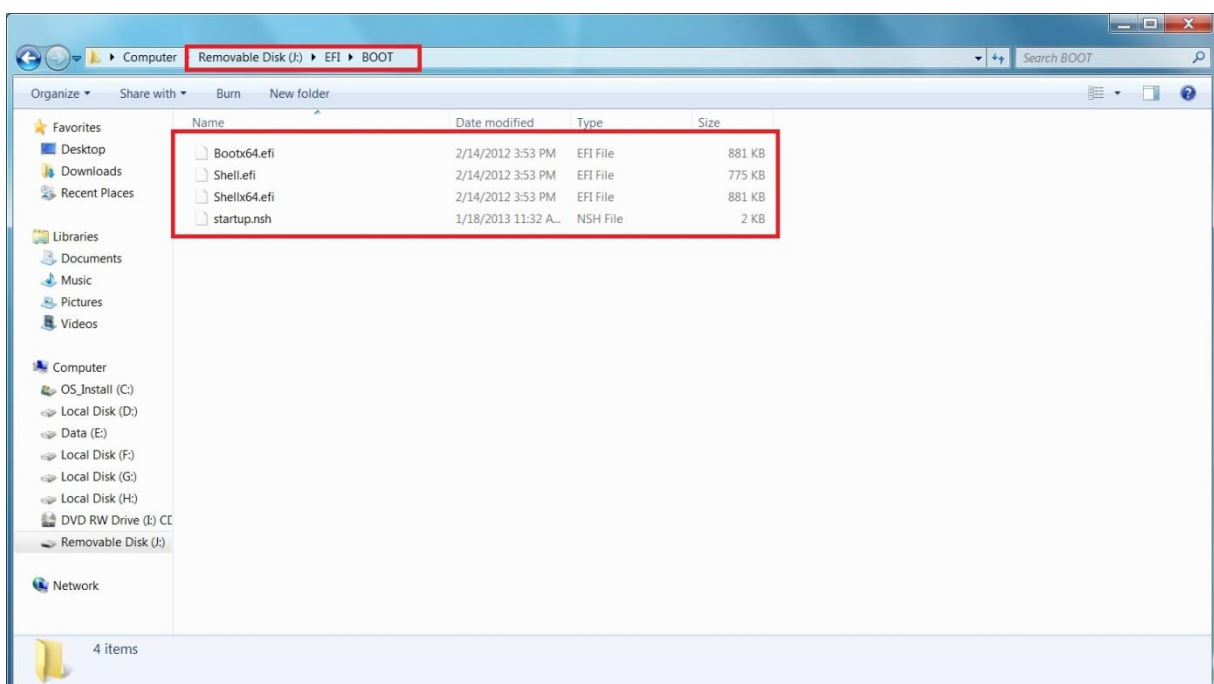
4. Extract the files from [EFI-AUTO.ZIP] to the root directory of your USB drive (should be formatted to FAT32).



Note1: Please place the EFI folder to the correct path, or it will not be bootable correctly.

Note2: The following files should be in X:\EFI\BOOT (replace X with the drive letter of your USB drive):

- Bootx64.efi
- Shellx64.efi
- Shell.efi
- startup.nsh



Part 2: Flashing Win8 UEFI BIOS

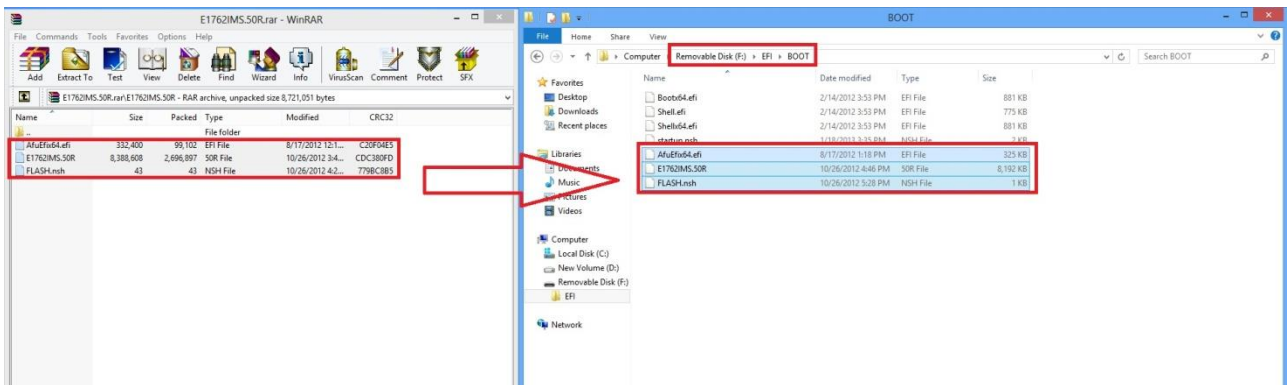
1. Visit MSI official website and download the corresponding Win8 BIOS of your system.

Click on the link below and enter your product's name (such as: GT72S 6QF) in the search bar to find the BIOS download page of your notebook.

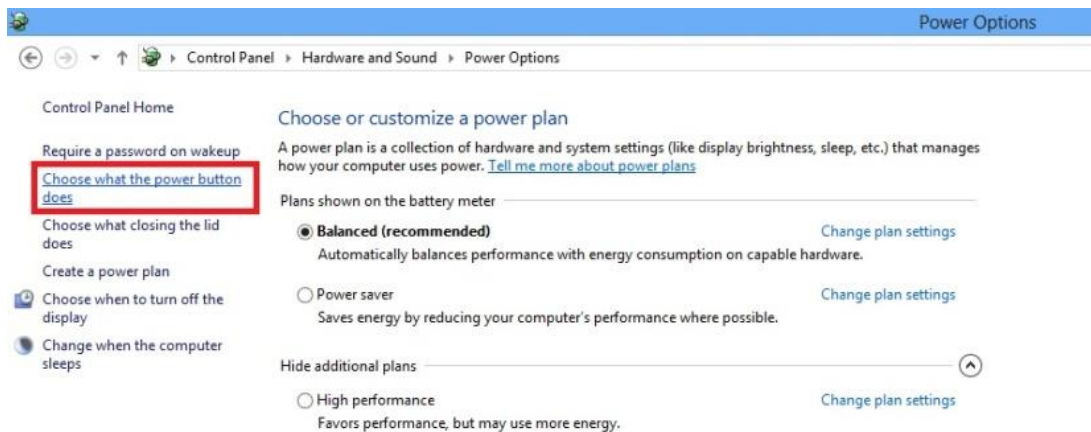
<https://www.msi.com/support>

2. Extract the downloaded BIOS to the folder EFI\BOOT\ for later use.

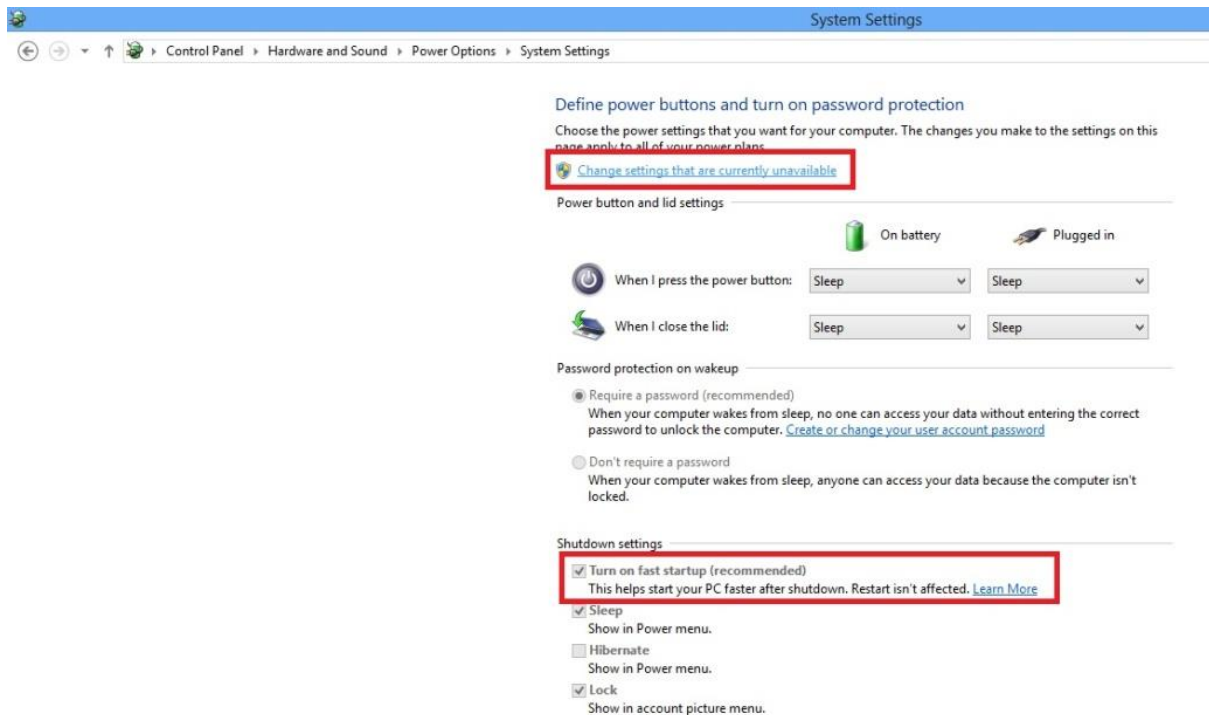
Note: The USB drive is the same drive used in Part 1.



3. Please go to [Control Panel > Hardware and Sound > Power Options], and select [Choose what the power button does].

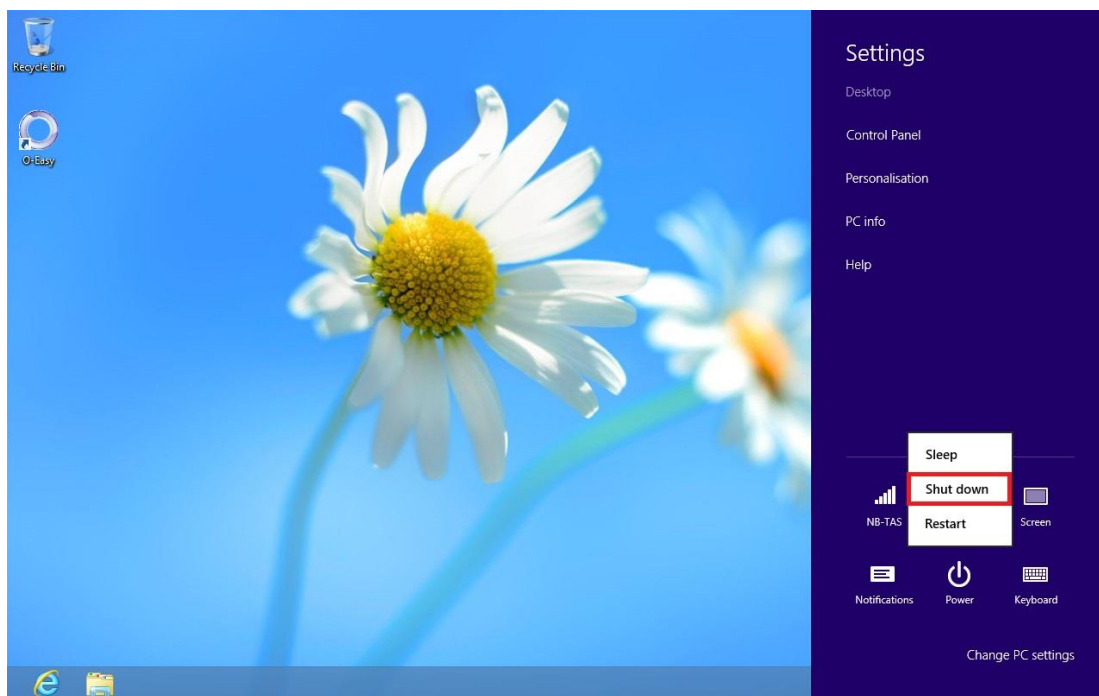


4. Select [Change settings that are currently unavailable] first, and uncheck [Turn on fast startup (recommended)]. Select [Save changes] to continue.

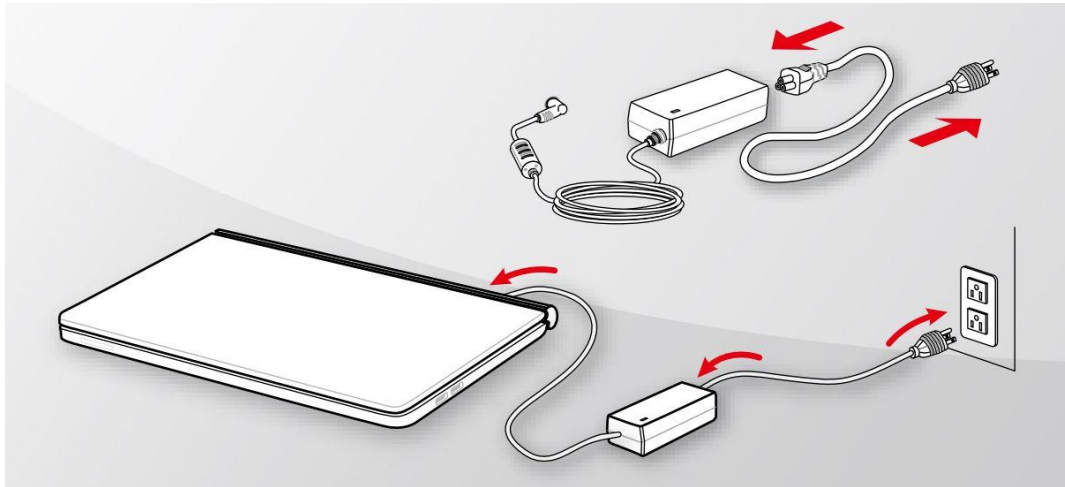


Note: If you want to use the fast startup function, you can go back here to check it on again after the BIOS is updated.

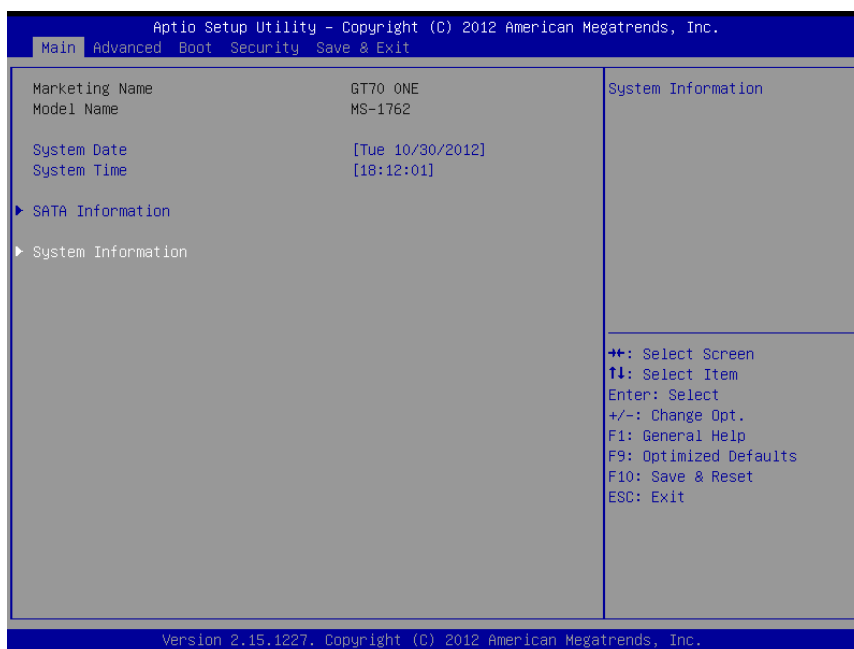
5. If above steps are finished, please shut down the system directly.



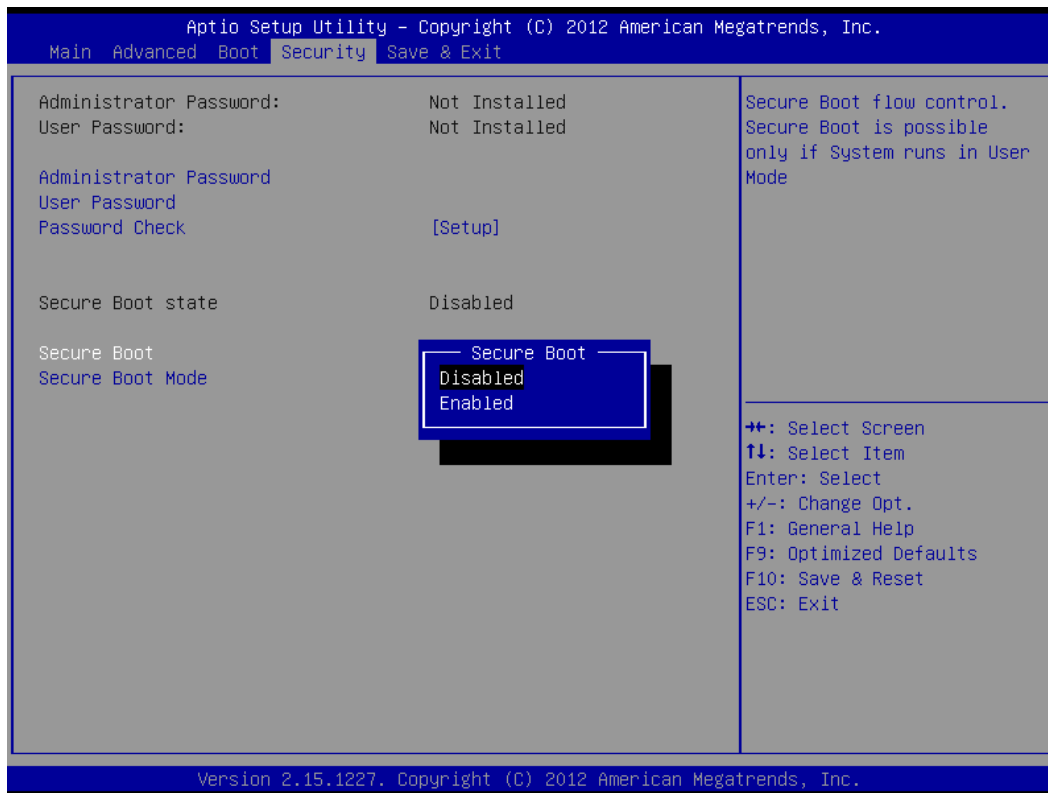
6. Power up your NOTEBOOK by plugging in power adapter. Make sure that NOTEBOOK is running AC power during the entire BIOS update process.



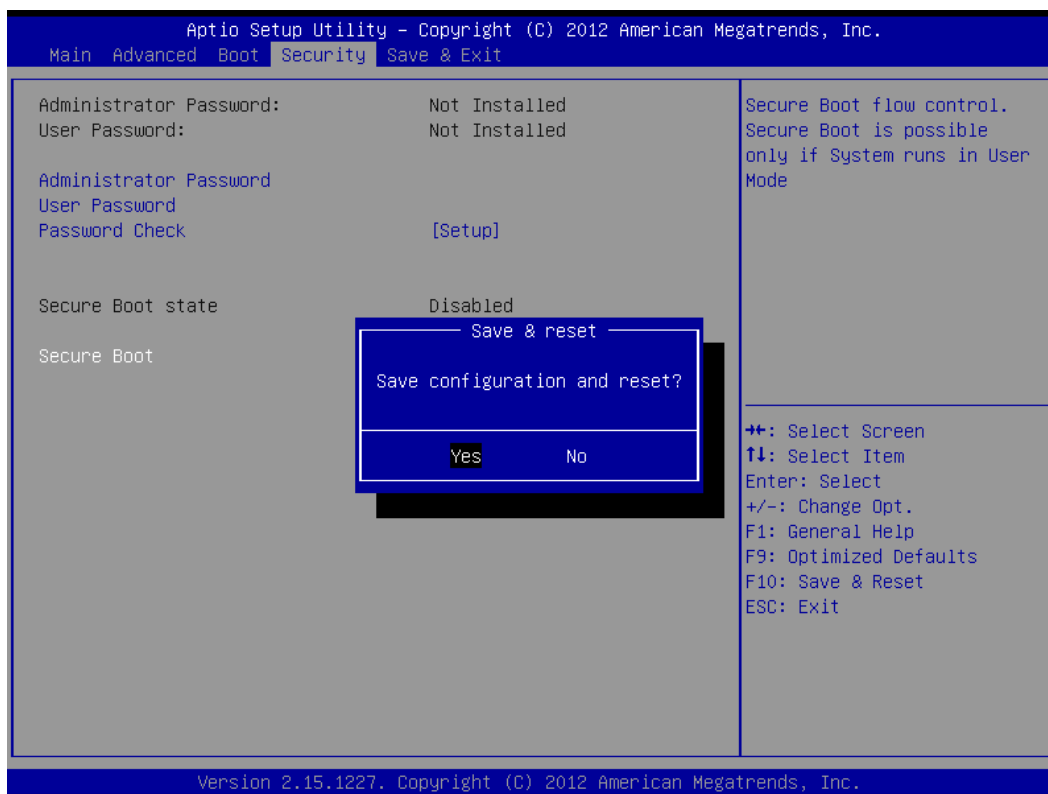
7. Power on NOTEBOOK and continue pressing [DEL] once MSI logo is displayed, until you are prompted to BIOS screen. See figure below:



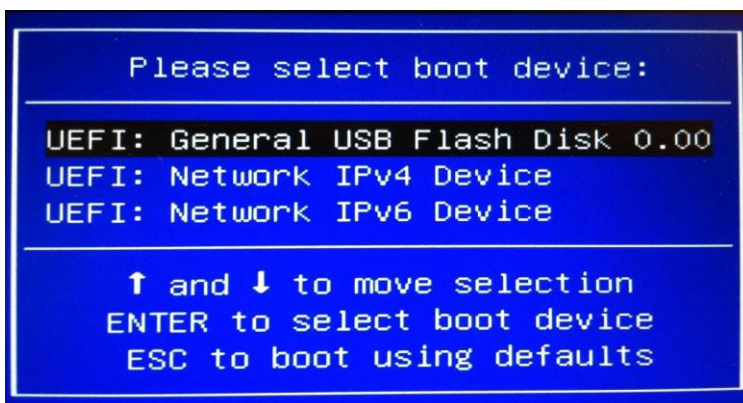
- Under Security tab, look for the option [Secure Boot] and set it to [Disabled].



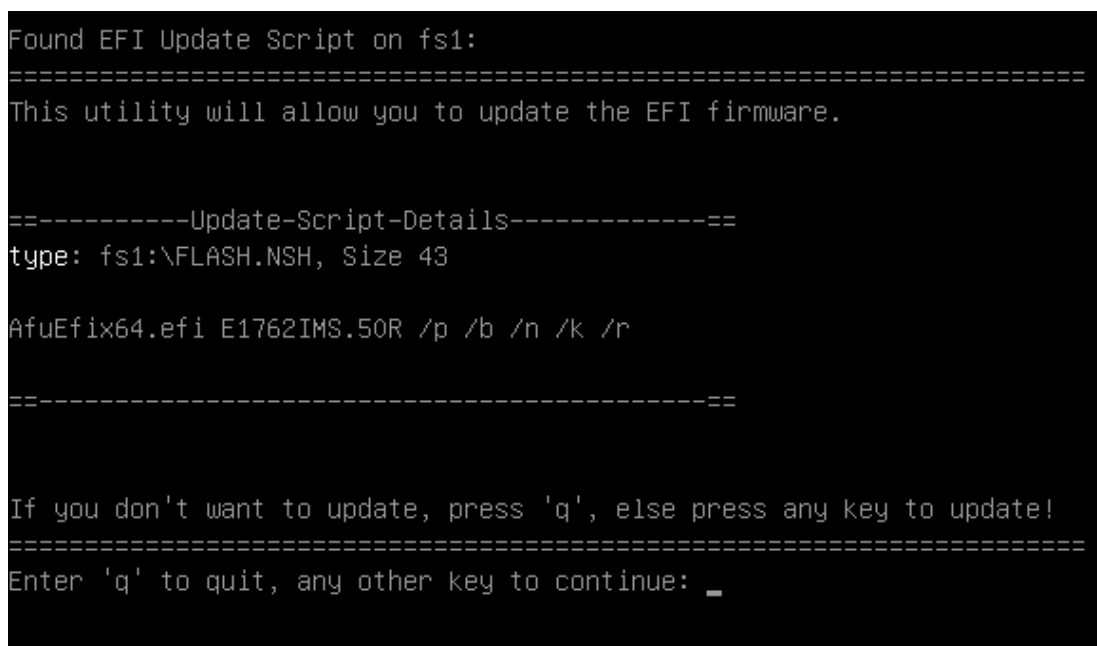
- Press [F10] to save and exit.



10. After system restarts, press function key [F11] to enter boot device menu. Select your USB device by pressing the arrow up/down key, then press enter.



11. During the booting procedure, the system will prompt you whether if you want to update the BIOS. You can press [q] to exit, or press any key to start updating.



12. Once BIOS flashing is done, type the command [reset] then press enter.

```

10/26/12  04:28p                43  FLASH.NSH
10/26/12  04:28p                47  FLASH_ME.NSH
   4 File(s)   8,721,098 bytes
   2 Dir(s)

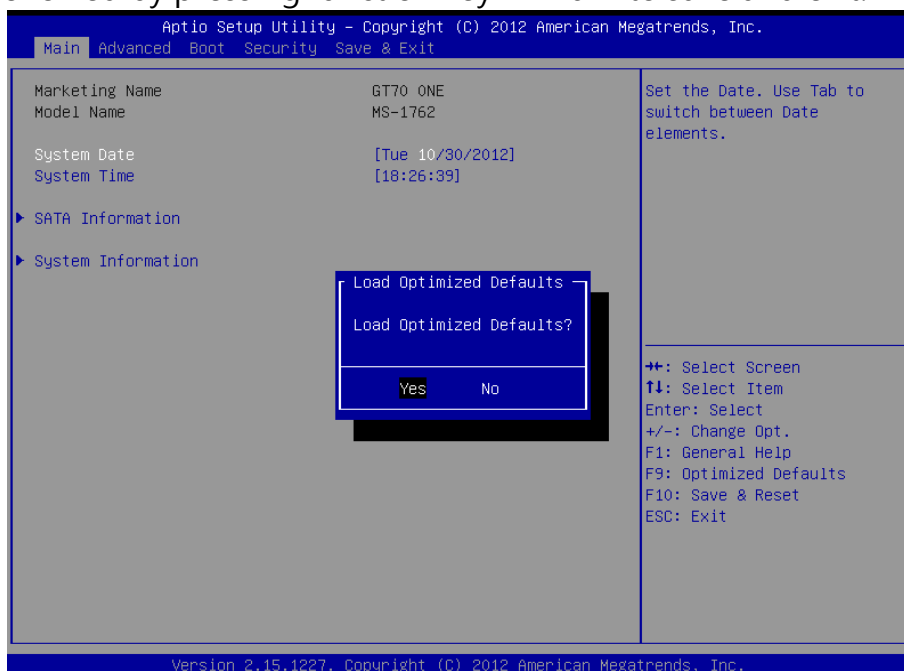
          保存屏幕
fs4:\E1762IMS.50R> flash
flash> AfuEfix64 /fi E1762IMS.50R /p /b /n /k /r
-----+-----
                AMI Firmware Update Utility  v3.03.00
                Copyright (C)2012 American Megatrends Inc. All Rights Reserved.
-----+-----

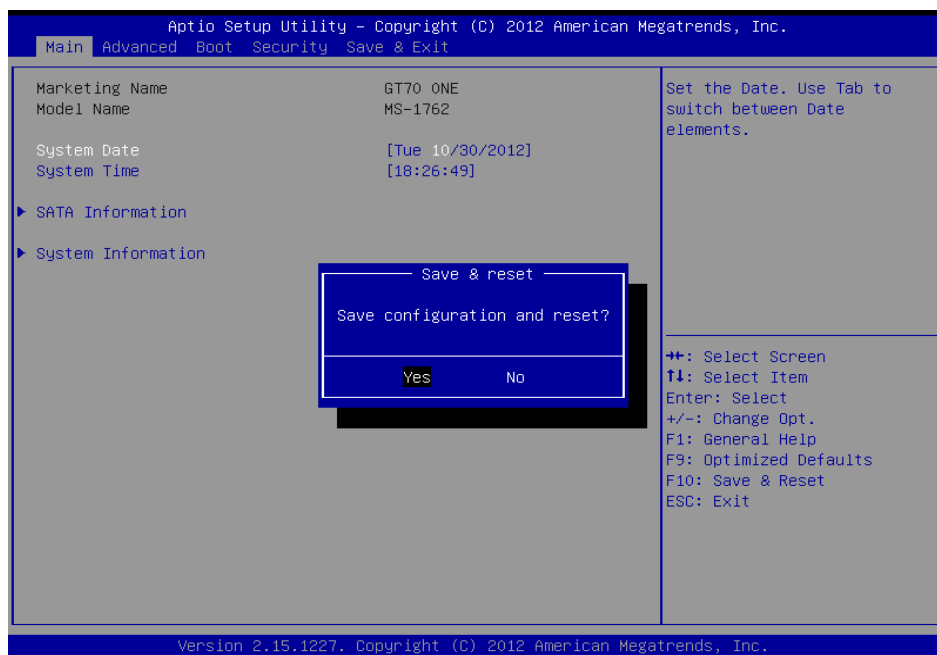
Reading flash ..... done
- ME Data Size checking . ok
Secure Flash enabled, recalculate ROM size with signature...
- FFS checksums ..... ok
Loading capsule to secure memory buffer ... done
Erasing Boot Block ..... done
Updating Boot Block ..... done
Verifying Boot Block ..... done
Erasing Main Block ..... done
Updating Main Block ..... done
Verifying Main Block ..... done
Erasing NVRAM Block ..... done
Updating NVRAM Block ..... done
Verifying NVRAM Block ..... done
Erasing NCB Block ..... done
Updating NCB Block ..... done
Verifying NCB Block ..... done

fs4:\E1762IMS.50R> reset_

```

13. Once the system restarts and BIOS POST logo appears, press [DEL] to enter BIOS set-up. Afterwards, press function key [F9] to load BIOS optimized defaults. Then followed by pressing function key "F10" to save and exit.





14. Windows 8 BIOS has been successfully updated